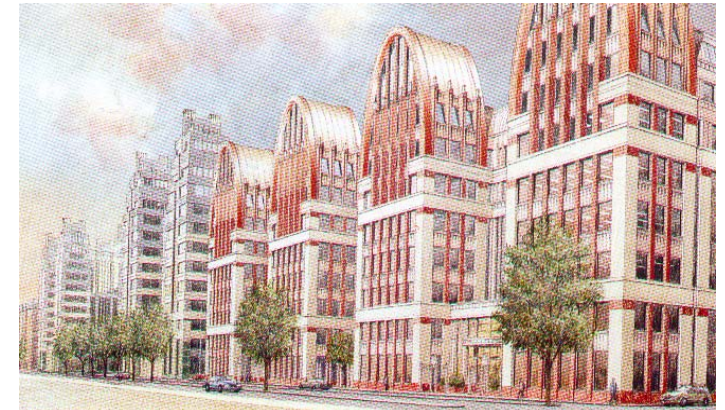
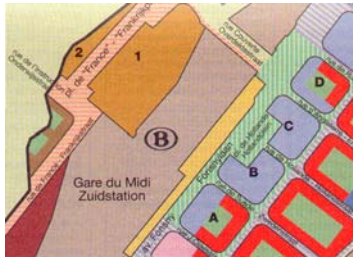


BRUSSELS REGION

Reurbanization of Fonsny - Midi railway station district

Brussels



General developer: Bruxelles-Midi SA
Other developers: Espace Midi – South City
Contract period, value and size:

1997-2008
32.000 m² ground on 4 blocks
135.000 m² above ground of new constructions in offices, retail, hotel and residential
total investment of more than 200 million EUR ex VAT

General description of aCSC services

Health & Safety Co-ordination

aCSC GARDINER & THEOBALD